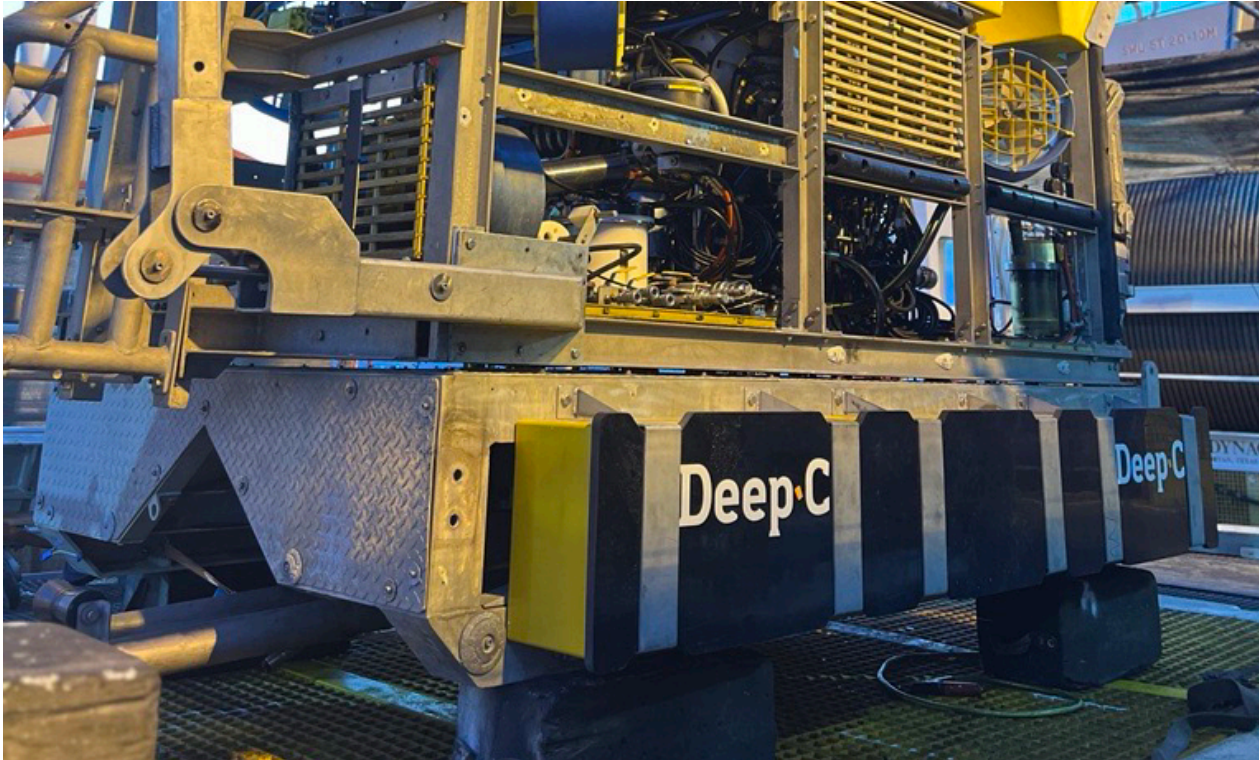


Deep·C[®]



Deep C ROV Trencher

Maximum Efficiency with Minimal Footprint

The Deep C ROV Trencher is a highly cost-efficient solution for trenching of control umbilicals, fibre optic and inter-array cables up to 150mm OD and down to 2000m water depth.

Skidded to any WROV and neutrally boyant, the trenching system requires only hydraulic supply from the ROV to operate. Two swords with jetting nozzles are lowered on each side of the cable, flushing the product down to 1,7m soil depth at up to 250 m/hour.

The Deep C ROV Trencher requires no deck space or manning and features an adjustable ROV interface to fit various types of ROVs.

To ensure an efficient and predictable trenching operation, Deep C offers PhD-level engineering within sediment dynamics to optimize equipment configuration.

Features



Trenches up to 250 m/hr and down to 1,7m below seabed



ROV-powered, no need for topside equipment



Low environmental impact

Technical Specifications

The Deep C ROV Trencher is a compact skid for trenching up to 2000m depth, delivering up to 3000 lpm via ROV-powered hydraulics. It features an integrated jetting system and optimized hose interfaces for efficient operation.

Contact sales@deepcgroup.com for more details.

Dimensions

LxWxH:	4 650 x 2 330 x 600 mm
Dry Weight:	850 kg
Weight Submerged:	200 kg
Max Water Depth:	2 000 m

Performance

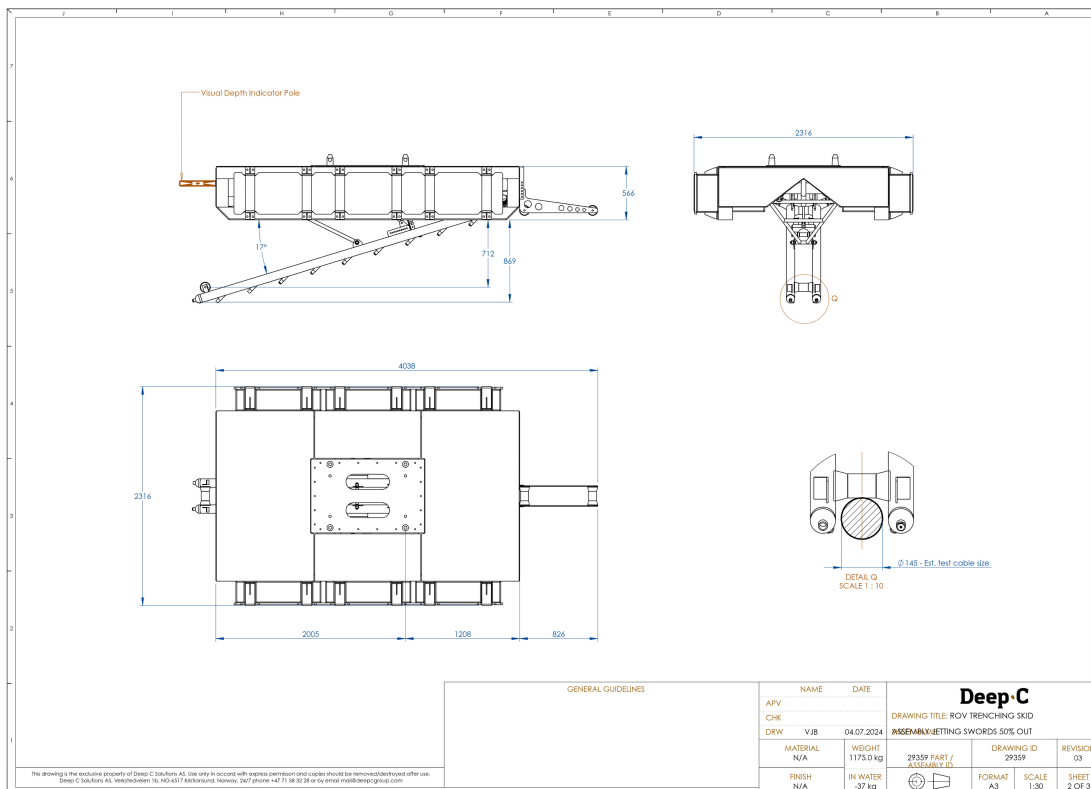
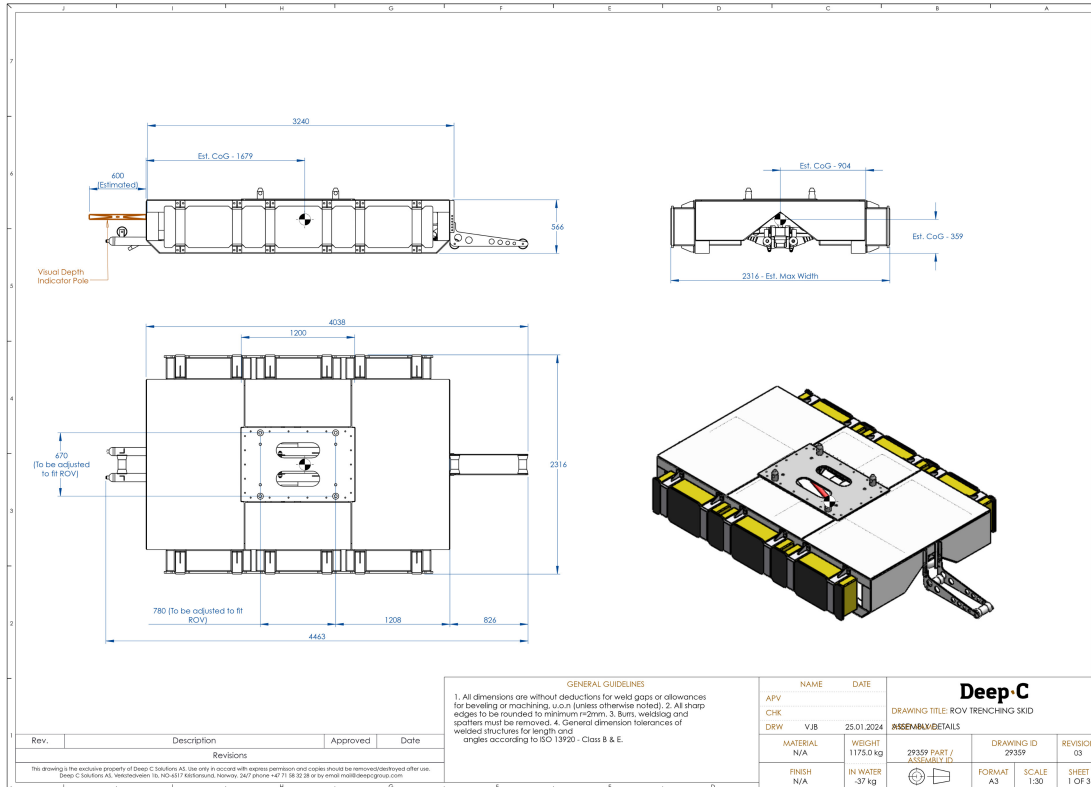
Single Pump Mode:	1 500 lpm
Dual Pump Mode:	3 000 lpm
Required Flow at 180 bar:	60 lpm

Pump Interface

Pressure:	3 m ¾" hose, JIC 12F
Return:	3 m ¾" hose, JIC 12F
Drain:	3 m ½" hose, JIC 8F
Cylinder Interface:	2 x 3 m ¼" hose, JIC 6F

Technical Drawings

General Arrangement



Technical Drawings

General Arrangement

